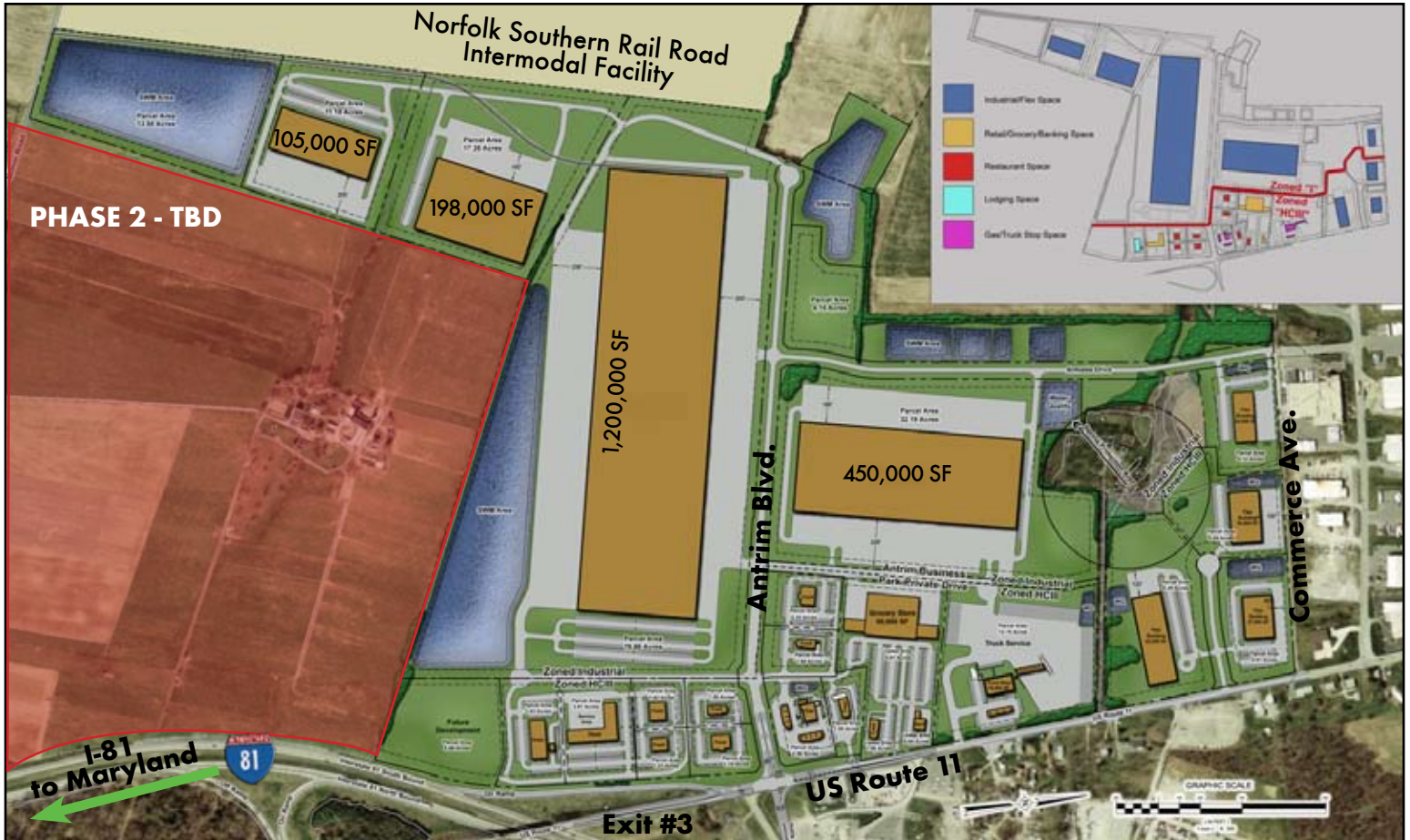


AVAILABLE

NORFOLK SOUTHERN INTERMODAL & ANTRIM COMMONS BUSINESS PARK

12875 MOLLY PITCHER HIGHWAY :: GREENCASTLE, PA



- I-81 direct exit ramp access and Rte. 11 visibility.
- Adjacent to Greencastle-Antrim Township Industrial Park anchored by Food Lion's 2 million SF warehouse and Corningware Glass 1.2 million SF warehouse.
- 1,800 SF of Rte. 11 and I-81 frontage.

**FOR MORE
INFORMATION
PLEASE
CONTACT**

Joseph B. McDermott
Senior Vice President
610.251.5107
joe.mcdermott@cbre.com
Licensed: PA
Licensed Salesperson: NJ

Patrick M. Lafferty,
CCIM, SIOR
Senior Vice President
717.221.4386
patrick.lafferty@cbre.com
Licensed: PA

CB Richard Ellis, Inc.
Locust Court | 212 Locust Street, Suite 300 | Harrisburg, PA 17101
T 717.238.9696 | F 717.238.2061 | www.cbre.com/harrisburg
Licensed Real Estate Broker

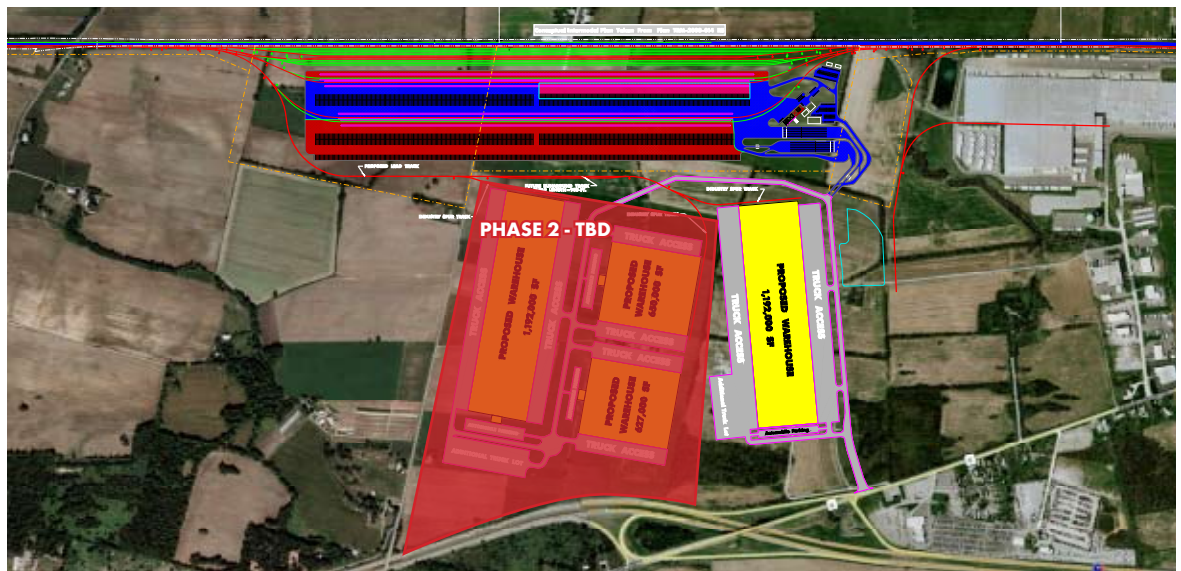
CBRE
CB RICHARD ELLIS

AVAILABLE

NORFOLK SOUTHERN INTERMODAL & ANTRIM COMMONS BUSINESS PARK

12875 MOLLY PITCHER HIGHWAY :: GREENCASTLE, PA

SITE PLAN



LOCATION MAP



FEATURES

- On site 200 acre Norfolk Southern Intermodal
- ±500 acre site
- Over 6 million SF planned
- Zoned Industrial and Highway Commercial (HCIII)
- Rail served by Norfolk Southern
- On-site industrial grade electric, gas, municipal water, and sewer

FOR MORE INFORMATION PLEASE CONTACT

Joseph B. McDermott

Senior Vice President
610.251.5107
joe.mcdermott@cbre.com
Licensed: PA
Licensed Salesperson: NJ

Patrick M. Lafferty,

CCIM, SIOR
Senior Vice President
717.221.4386
patrick.lafferty@cbre.com
Licensed: PA

CB Richard Ellis, Inc. | Locust Court | 212 Locust Street, Suite 300 | Harrisburg, PA 17101
T 717.238.9696 | F 717.238.2061 | www.cbre.com/harrisburg | Licensed Real Estate Broker

© 2010 CB Richard Ellis, Inc. This information has been obtained from sources believed reliable. We have not verified it and make no guarantee, warranty or representation about it. Any projections, opinions, assumptions or estimates used are for example only and do not represent the current or future performance of the property. You and your advisors should conduct a careful, independent investigation of the property to determine to your satisfaction the suitability of the property for your needs.

