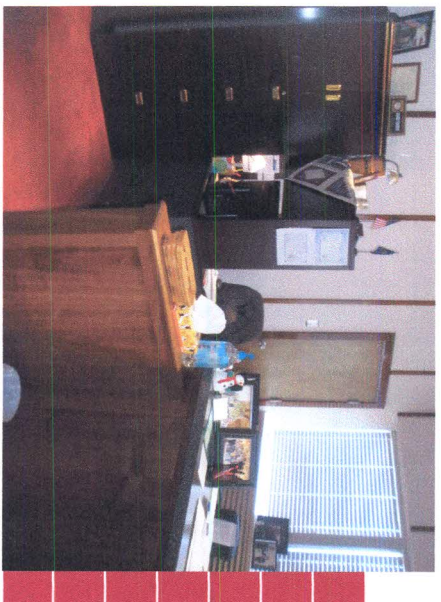


# “Welcome to the Neighborhood”

Tucked in the Appalachian Mountain, Waynesboro, Pennsylvania, is within one hour from Baltimore, MD and Washington, D.C and within three hours of Pittsburgh and Philadelphia, PA.

650,000 Square foot Warehouse/office complex on 85+ acres



State Representative Todd Rock's Office



## Let us Introduce Ourselves!

GEOFAM an affiliate of D.L. George & Son's, purchased the Complex in 2009.

The George family purchased the complex with the idea to make a thriving business park and in turn, bring more businesses into area.

The George's, are also local home grown business of 50 plus years and owners of D.L. George & Sons Construction, Transportation & Manufacturing Co, also located in Waynesboro, with a total of 270+ employees.

Contact us at  
**717-765-4700**

Ask for Dave, John, or Travis George

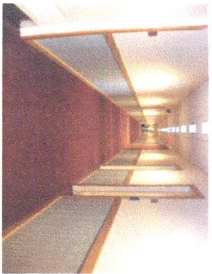
[www.landiscomplex.com](http://www.landiscomplex.com)

20 East Sixth Street  
Waynesboro, PA 17268



Be a part of the Landis Complex  
A Waynesboro landmark known as the most significant industrial building in the community





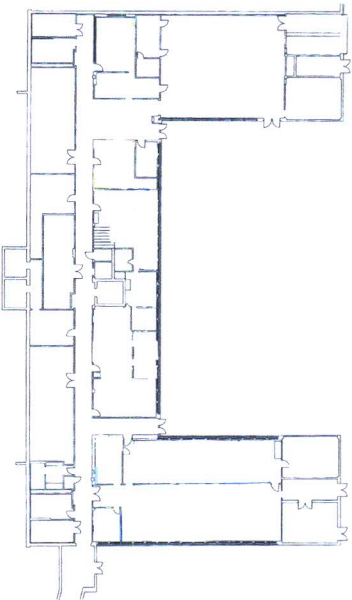
## Looking For a Place to Call Home

- ❖ Gated Facility
- ❖ Video Surveillance
- ❖ Key Card Access
- ❖ 500 + Parking Spaces
- ❖ Elevators
- ❖ Lawn Maintenance
- ❖ Snow Removal
- ❖ Cafeteria – *Opening Soon!*
- ❖ Tractor Trailer Access
- ❖ In House State Rep.

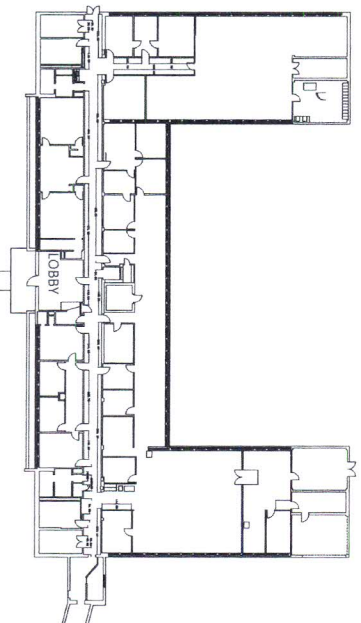


45 acres of industrial ground available to lease or purchase

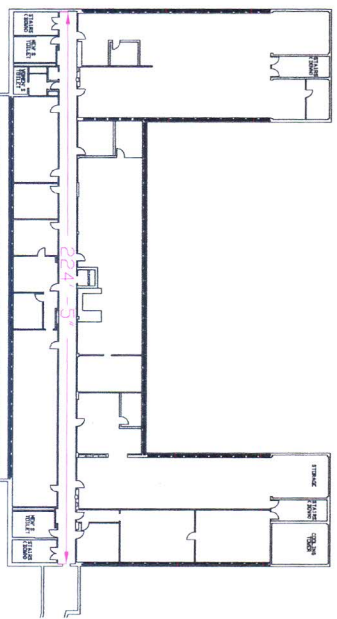
### LAYOUT OF FIRST FLOOR



### LAYOUT OF MAIN FLOOR



### LAYOUT OF THIRD FLOOR



**Commitment and Loyalty**  
to the Waynesboro community that encourages people to believe in the future of our small town.