

2019 FRANKLIN COUNTY PROFILE



LOOK NO FURTHER



Location, Access, and Infrastructure...

One of Franklin County's greatest assets is its location and easy access to substantial and growing industrial and consumer markets. Franklin County is situated within one day's drive of more than 50% of the North American population.

Highway Access/Transportation... Franklin County's extensive interstate highways, two Class-1 railroads, and intermodal services provide immediate and cost-effective access to major markets and talent from Charlotte, NC to Toronto, Canada and beyond.

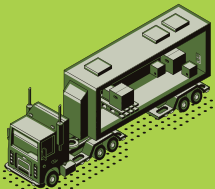
Franklin County is located in the heart of Southcentral Pennsylvania, and offers those considering relocating or expanding into the Mid-Atlantic region a great location, great infrastructure, great people, and a great quality-of-life.






On average
45,250
vehicles
travel I-81 through
Franklin County
on a daily basis

(source: PennDOT, Franklin County
Traffic Volume Map 2018)

Locally CSX
Intermodal
moves roughly
150,000
shipping containers
per year

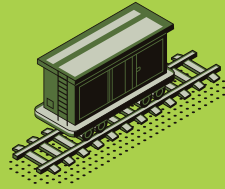
HIGHWAYS



-  I-81
-  I-76 PA Turnpike
-  I-70
-  US Route 30
-  US Route 11

- Extensive network of state owned/maintained roadways

RAIL



Norfolk Southern

Norfolk Southern Franklin County Regional Intermodal Terminal (PA Exit 3, I-81)



CSX

CSXI Intermodal Terminal (PA Exit 14, I-81)



Pennsylvania & Southern Rail (short line service within the Cumberland Valley Business Park)

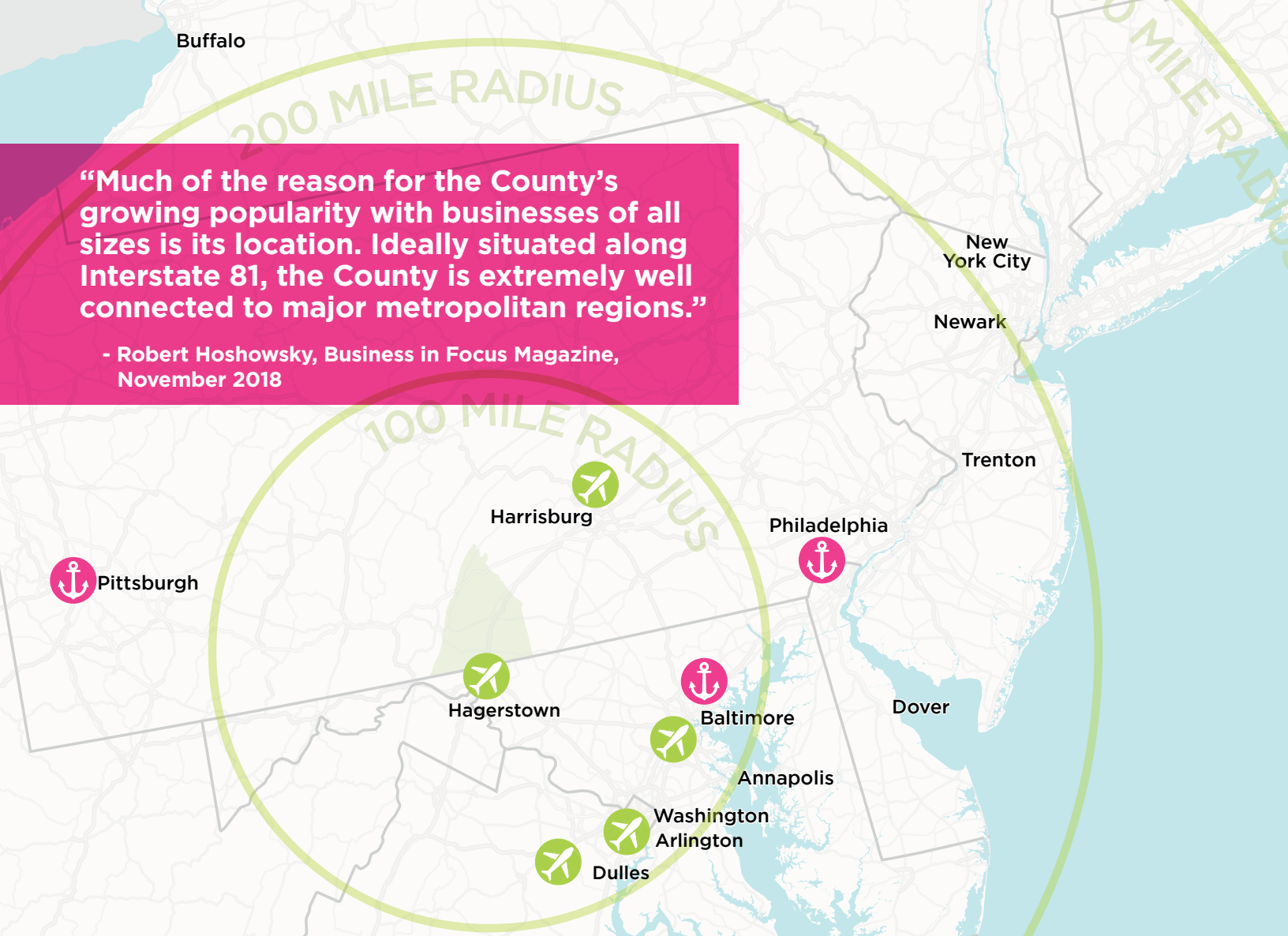


The Railroad Associates Corporation, TRAC (short line service within the Chambers-5 Business Park)

Buffalo

“Much of the reason for the County’s growing popularity with businesses of all sizes is its location. Ideally situated along Interstate 81, the County is extremely well connected to major metropolitan regions.”

- Robert Hoshowsky, Business in Focus Magazine, November 2018



AIR

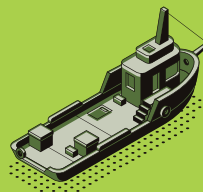


Thurgood Marshall/BWI, Dulles International, and Reagan National 75 minutes

Harrisburg, PA International Airport 60 minutes

Hagerstown, MD Regional Airport (general aviation, limited commuter service) 10 minutes

WATER



Port of Baltimore 75 minutes



Port of Philadelphia 3 hours



Port of Pittsburgh 3 hours

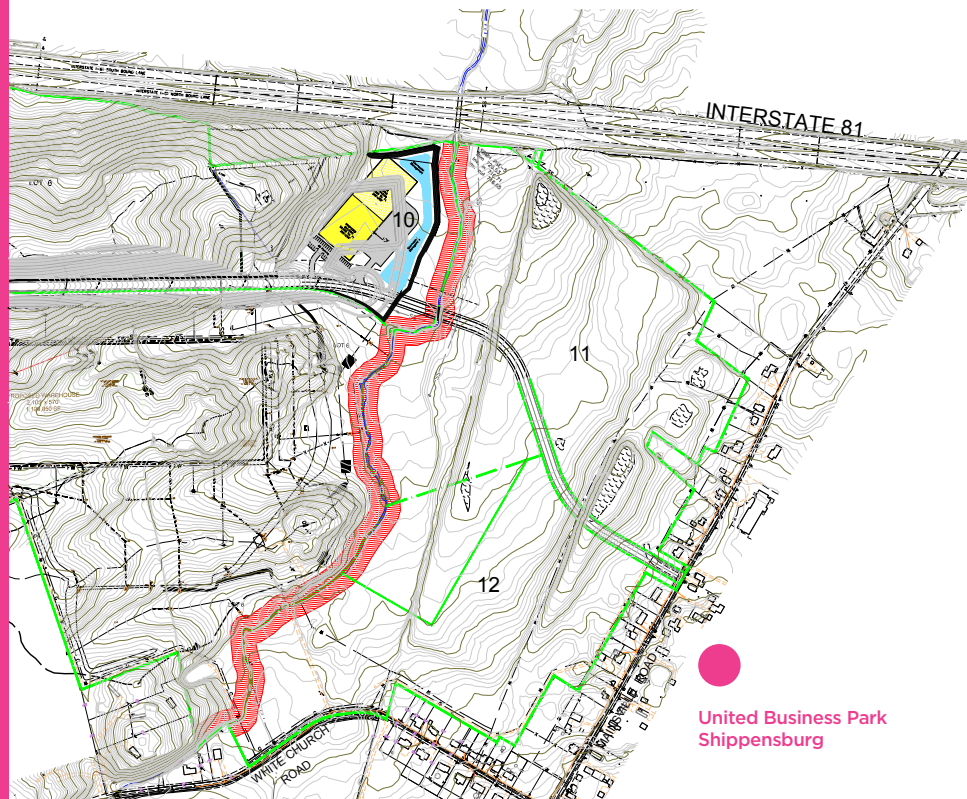
Franklin County has “Shovel Ready” sites.

The County offers more than **1,500 acres** of developable land, all of which are conveniently located to major transportation corridors and public utilities.

Check out **www.fcadc.com** for an up-to-date database of available industrial real estate.



Greencastle Intermodal Park
Greencastle



United Business Park
Shippensburg

Socio-Economic Profile

DEMOGRAPHICS...



51%

49%



Median Age

41.3
years

3.1%

population growth
since 2010

152,892

153,638

153,851

154,234

'14

'15

'16

'17


Our County population has been one
of the fastest growing in the state

Skilled Talent

We've got you covered

Franklin County's prime location along Interstate 81 is critical to attracting talent from the Quad-State Region of Maryland, West Virginia, and Virginia, as well as other counties throughout southcentral, PA. The region boasts a civilian labor force of more than **600,000** highly skilled and dependable workers within 40 miles of the heart of Franklin County!

(Source: US Bureau of Labor Statistics, Labor Force Data by County, 2017)

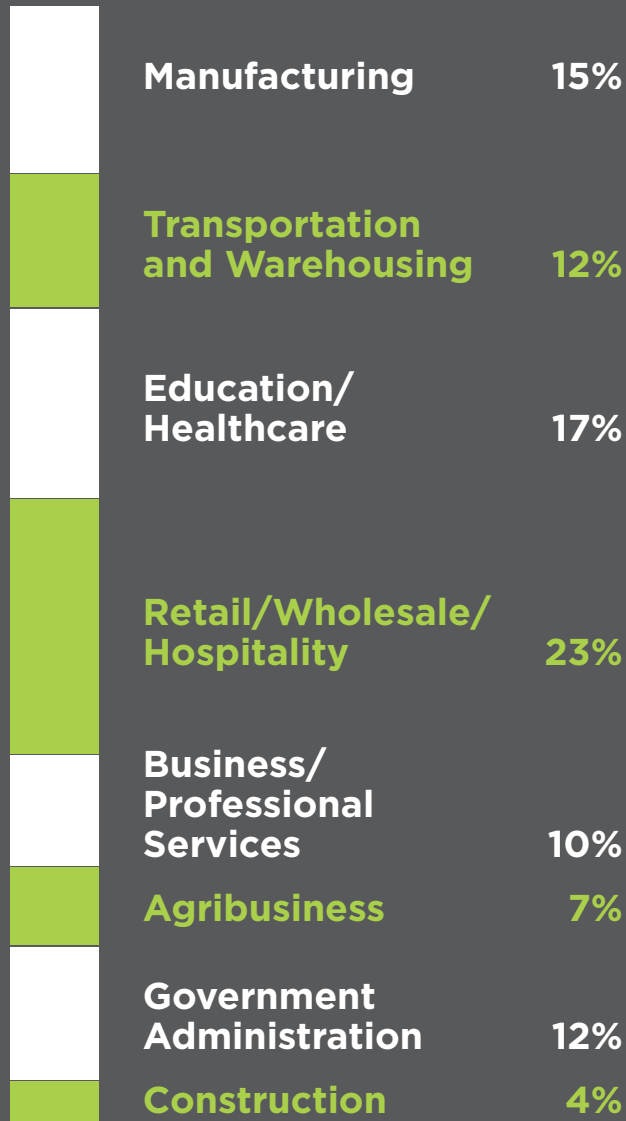


“For right now, the skilled workforce in our region-in addition to our location and accessibility-is really a key factor in our growth.”

-Jesse McCree, CEO, South Central PA Workforce Development Board, Business in Focus Magazine, November 2018

Economic Snapshot...

We like to mix-it-up...Franklin County boasts an extremely diversified and growing economy



Franklin County
Average Labor Data 2018

76,617
Labor Force

3.7% Unemployed

1.8%
year-over-year
job growth in 2018

2.9%
year-over-year
wage growth in 2018

(Source: South Central PA Workforce Development Board, Economic Overview, Franklin County, Churma Economics and Analytics, January 2019 & PA Department of Labor and Industry, January 3, 2019)

(Source: PA Department of Labor and Industry, Workforce Information News Release, Chambersburg-Waynesboro MSA, January 3, 2019)

Some of
the most
recognized
companies
in the world
call Franklin
County
home.

Franklin County
manufacturers
contributed
more than
\$1.1 Billion
of County GDP in 2017...
the most of any sector.

(Source: South Central PA Workforce Development
Board, Economic Overview, Franklin County,
Churma Economics and Analytics, January 2019)



INGRAM.



Summit
Health.

THE PEAK OF GOOD HEALTH



TB Wood's®

Altra Industrial Motion



national book network



Volvo Constructio
Equipment



Corelle
Brands



New Enterprise
Stone & Lime Co., Inc.



Top Employers in Franklin County

Summit Health	3,700
Letterkenny Army Depot	3,000
Manitowoc Crane Group	1,400
Chambersburg Area School District	1,190
Volvo Construction Equipment	825
Procter & Gamble Northeast Mixing Center	800
Target Distribution Center #589	750
Franklin County Government	710
Menno Haven Retirement Community	650
Ventura Foods, LLC	650

Top Manufacturing Employers in Franklin County

Manitowoc Crane Group	1,400
Volvo Construction Equipment	825
Ventura Foods, LLC	650
Martin's Famous Pastry Shoppe, Inc.	560
Johnson Controls/Frick	500
D.L. George & Sons	290
TE Connectivity	285
Eldorado Stone	265
New Enterprise Stone & Lime Co., Inc.	250
TB Woods, Inc.	225

Top Logistics, Warehousing, and Distribution Employers in Franklin County

Procter & Gamble Northeast Mixing Center	800
Target Distribution Center #589	750
Corelle Brands	500
Food Lion, Inc.	500
Ulta Beauty Distribution	450
Staples Direct	350
US Xpress Enterprises	350
National Book Network	320
Ingram Book Company	285
Hoffman Transport	120

Employment is Approximate February 2019

U.S. XPRESS



TARGET

Martin's
Famous
Pastry Shoppe, Inc.®

Johnson Controls

Ventura Foods, LLC

ELDORADO STONE

Manitowoc

STAPLES



Agribusiness continues to be a major component of Franklin County's economy.

Agriculture comprises more than 242,600 acres of land in Franklin County. The County ranks 2nd in the state for the production of milk, cattle, apples, peaches, and corn for silage. To date more than 17,000 acres of production ag land have been preserved for future generations.



There are nearly
1,600
family farms
in Franklin County

(Source: Franklin County Agricultural Land Preservation Board & Penn State University Extension Service, Prepared by the Franklin County Planning Department, January 2019)

Franklin County is a great place to work, live, and play.

Education

To build the talent that growing businesses need, Franklin County provides a broad spectrum of quality educational opportunities. Options range from pre-school through post-secondary.

6 Public school districts

Franklin County Career and Technology Center
CareerTech

Franklin County is within a two hour drive of Penn State University (University Park), one hour drive of the HACC main campus, and one-half hour drive from Gettysburg College and Dickinson College. In addition, the Hagerstown, MD Community College (HCC), Kaplan University of Hagerstown, MD, Mount St. Mary's University, and The University System of Maryland at Hagerstown are within a 15-minute drive of Franklin County.

3 colleges/universities

Home to the prestigious **Mercersburg Academy** as well as other private institutions

Colleges and Universities in Franklin County include:



- **Shippensburg University** (rated #112 of America's Best Regional Universities 2019 (North) by US News and World Report)



- **Penn State University-Mont Alto** Branch Campus (rated #59 of America's Best National Universities 2019 by US News and World Report)



- **Wilson College** (rated #16 of America's Best Regional Colleges 2019 (North) by US News and World Report)

(Source: US News and World Report, America's Best College's 2019)

To meet the growing needs of employers, in addition to its supply chain management and business programs, **Shippensburg University** has recently introduced degree programs in civil, electrical, mechanical, and computer software engineering.

Healthcare

Our healthcare is Focused on Being the Best...Summit Health, is recognized as an award winning, cost effective, high-quality healthcare system. Summit Health is the parent company to:

- **Chambersburg Hospital**

- o 273 bed acute and critical care facility providing diagnostic, behavioral health, and surgical services with 24-hour emergency room service

- **Waynesboro Hospital**

- o 57 bed hospital providing acute and critical care services including diagnostic, therapeutic, and surgical services with a 24-hour emergency room

- **Two Urgent Care Centers**

- **Two Walk-in Care Centers**



Summit Health
has an estimated
\$796 Million
regional economic
impact, including
\$56 Million
in direct
community outreach.

(Source: Summit Health, Annual Report Fiscal Year 2018,
www.summithealth.org)

NEW In 2019



Now part of WellSpan Health



In November 2018, Summit Health and York-PA based WellSpan Health **merged healthcare systems**. WellSpan brings six hospitals, a group of more than 1,200 highly experienced physicians and practice clinicians, and 15,000 employees to join forces with Summit's more than 280 skilled physicians and specialists and 3,700 employees.



In addition to WellSpan/Summit, Franklin County is also served by Keystone Health, a nationally recognized, Federally Qualified Community Health Center. Keystone operates **several state-of-the-art locations** throughout the County and employs 475 healthcare professionals. Visit www.keystonehealth.org for additional information.



62,000 square foot Keystone Health Medical office building in Chambersburg. COMING IN 2019!

Public Safety

We have a low crime rate.

The County boasts an extremely low crime rate across all categories of offenses. In 2016, the crime rate was

2.7%
per 100,000 people.

(Source: The Pennsylvania State Police, Uniform Crime Reporting System, Annual Uniform Crime Report, Offenses Reported by County 2016)

Housing

Franklin County offers an expanding range of affordable housing opportunities

- 65,430 total estimated housing units
- \$1,349 Average Monthly Housing Ownership Costs (with mortgage)
- \$832 Average Gross Rental Costs



**Median home values
have increased
9% since 2016**

**Median Home Value
\$182,000**

**Median Household Income
\$60,979**

(Source: US Census Bureau, Selected Housing and
Income Characteristics 2017)

Taxes

Pennsylvania does NOT levy a tax on inventory, tangible personal property, machinery, or equipment. Additionally, machinery and equipment used directly in the manufacturing process is exempt from state sales tax.

This listing is a summary of the most common business taxes.

Economic Development Incentives

In Franklin County, businesses have access to myriad incentive programs designed to support long-term business growth. Some of the more widely used programs include assistance for real estate purchases, construction, and renovations, as well as machinery and equipment upgrades and workforce development.

For a complete listing of economic development incentive programs, please visit www.newpa.com

Note: Certain programs are subject to availability of funds and job creation requirements. All programs require an application in order to access funds.

Personal Income Tax (PIT)

- The current rate is 3.07%

Corporate Net Income Tax (CNI)

- The current rate is 9.99%

Real Estate Transfer Tax

- The current rate is 2.0%

Local Real Estate Property Tax

- Levied by Municipalities, School Districts and County Government
- Rates vary

Sales & Use (SUT) Tax

- *The current SUT is 6.0%*

Unemployment Compensation Tax (UC)

- Paid on the first \$10,000 of wages for each employee on an annual basis
- 3.5% New Employer Rate (non-construction)

Workers' Compensation

- Mandatory coverage of certain employees engaged in the "regular course" of the employer's business

(Source: Pennsylvania Department of Revenue and Pennsylvania Department of Labor and Industry)

Depending on the locality there could be other taxes that are administered. For detailed taxes and rates see: <https://dced.pa.gov/local-government/local-income-tax-information/>

Utilities

The County is served by a full range of cost effective and reliable public utilities including public water and sewer, electric, natural gas, and telecommunications.

Tourism is a major component of the Franklin County economy. Over 1,800 hotel rooms support visitation in excess of **450,000 people** annually, which results in a direct economic impact of **\$320 Million** and supports **2,500 jobs.**

(Source: Franklin County Visitor's Bureau, January 2019)



Leisure and Hospitality

Focus Your Appetite On Franklin County

The County is home to a growing number of locally and nationally owned and operated restaurants, pubs, eateries, and retailers.

In 2018 the growing leisure, hospitality, and retail trade sectors accounted for nearly **15,000 jobs.**

**Franklin
County**
is home to a
wide variety
of recreation
and cultural
opportunities.
Just look
at some of
the things
we have.

- Whitetail Resort (skiing/golf)
- Penn National Golf Resort (additional public and private golf courses in the area)
- Capital Camps & Retreat Center
- President James Buchanan Birthplace and Buchanan State Park
- Michaux, Buchanan, and Tuscarora State Forests
- Camp Penn State Park
- Hunting and Fishing on abundant state game lands
- The Appalachian Trail (The Greater Waynesboro Area is a designated "Appalachian Trail Community")
- The Monterey Pass Battlefield Park and Museum
- Capitol Theatre
- Caledonia State Park and Totem Pole Playhouse
- H. Ric Luhrs Performing Arts Center at Shippensburg University
- Renfrew Institute for Cultural and Environmental Studies
- Tayamentasacta Environmental Center
- Tuscarora Wildlife Education Project
- Extensive Network of Municipal Parks and Trails
- Multiple Community-based festivals and carnivals (seasonal)
- Community Farmer's Markets (seasonal)

Important Franklin County Web Links

Greater Chambersburg Chamber of Commerce
chambersburg.org

Greater Waynesboro Chamber of Commerce
waynesboro.org

Greencastle-Antrim Chamber of Commerce
greencastlepachamber.org

Tuscarora Area Chamber of Commerce
mercersburg.org

Shippensburg Area Chamber of Commerce
shippensburg.org

County of Franklin (Government)
franklincountypa.gov

Franklin County Visitor's Bureau
explorefranklincountypa.com

PA CareerLink Franklin County
jobgateway.com

Shippensburg University Small Business Development Center
ship.edu/sbdc

Franklin County Works
franklincountyworks.com

Summit Health
summithealth.org

WellSpan
wellspan.org

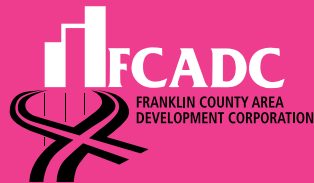
Keystone Health
keystonehealth.org

United Way of Franklin County
uwfcpa.org

Healthy Franklin County
healthyfranklincounty.org

Franklin County

is the center of the scenic Cumberland Valley. With reasonable lodging rates and more than 1,800 hotel rooms, the County's convenient location couples early frontier, Underground Railroad, and Civil War history with seasonal beauty, year-round recreation, and old-fashioned, hometown appeal. In addition, the County is within 30 minutes of historic Gettysburg and Antietam National Military Parks and 15 minutes of Hagerstown, MD; 30 minutes of Frederick, MD; 60 minutes of Harrisburg, PA; and within 90 minutes of the Baltimore/Washington D.C. metro areas, thus creating even more access to recreation, shopping, and cultural activities.



1900 Wayne Road, Chambersburg, PA 17202 | 717.263.8282 | 717.263.0662 fax | www.fcadc.com

The Franklin County Area Development Corporation is an award-winning Economic Development Agency charged with formulating, implementing, and promoting a comprehensive county-wide economic development strategy. The Corporation strives to create an atmosphere that nourishes planned growth and family sustainable employment opportunities.

